

## Ravenscroft Safeguarding and Child Protection Policy



At Ravenscroft Community Primary School the named personnel with designated responsibility for safeguarding are:

<b>Designated Safeguarding Lead</b>	<b>Deputy Designated Safeguarding Lead</b>	<b>Safeguarding Governor</b>
Glenys Willmitt	Jeanette Hegarty	Keith Simpson

The named personnel with designated responsibility regarding allegations against staff are:

<b>Designated Senior Manager</b> (normally the Headteacher)	<b>Deputy Designated Senior Lead</b>	<b>Chair of Governors</b> (In the event of an allegation against the Headteacher)
Jeanette Hegarty	Lisa Milner	Paul Wiseman

Policy approved	October 2018
Signed	
To be reviewed	October 2019

## Ravenscroft Safeguarding and Child Protection Policy

We Follow Procedures for Knowsley Schools and Education Settings.

Agreed and shared October 2018

**This policy reflects current legislation and statutory guidance in relation to child protection and safeguarding in school and educational settings. It has been shared with staff and Governors and ratified.**

### 1. Ravenscroft Community Primary Policy Statement

The aim of this policy is to promote a safe environment where child safeguarding concerns in relation to a child can be managed in an appropriate way.

Ravenscroft Community Primary acknowledges the **duty** of care to safeguard and promote the welfare of children and is committed to ensuring safeguarding practice reflects statutory responsibilities, government guidance and complies with best practice standards and Ofsted requirements.

#### Para. 2

Safeguarding and promoting the welfare of children is **everyone's** responsibility. Everyone who comes into contact with children and their families and carers has a role to play in safeguarding children. In order to fulfil this responsibility effectively, all professionals should make sure their approach is child-centred. This means they should consider, at all times, what is in the **best interests** of the child.

**Keeping Children Safe in Education, September 2018**

This policy recognises that the welfare and interests of children are paramount in all circumstances. It aims to ensure that, regardless of age, gender, religion or beliefs, ethnicity, disability, sexual orientation or socio-economic background, all children have a positive and enjoyable experience of activities at school in a safe child centred environment. In addition, ensuring the protection of children from abuse, whilst participating in education wherever such learning/activity takes place.

Within this policy document it is understood that some children, including children with special education needs and disabilities, can be particularly vulnerable to abuse and neglect. It is understood that,

#### Para. 107

...“additional barriers can exist when recognising abuse and neglect in this group of children. This can include,

- assumptions that indications of possible abuse such as behaviour, mood and injury relate to the child's disability without further exploration;
- being prone to more peer group isolation than other children;
- the potential for children with SEN and disabilities can be disproportionately impacted by behaviours such as bullying, without outwardly showing any signs; and
- communication barriers and difficulties in overcoming these barriers”.

**Keeping Children Safe in Education, September 2018.**

In this policy we accept the responsibility to take reasonable and appropriate steps to ensure their welfare and consider extra pastoral support for children with SEN and disabilities.

As part of this safeguarding child protection policy, and in accordance with Keeping Children Safe in Education, September 2018, we will;

- Promote and prioritise the safety and wellbeing of all children and young people
- Ensure everyone understands their roles and responsibilities in respect of safeguarding and child protection
- Ensure all staff have read Part 1 of the Keeping Children Safe in Education, September 2018 Guidance document, and have completed a signed record to say they have done so
- Ensure everyone has appropriate learning opportunities to recognise, identify and respond to signs of abuse, neglect and other safeguarding concerns relating to children and young people.
- Ensure in the event of incidents/concerns of abuse, appropriate action is taken, and support provided to the individual/s who raise or disclose a concern.
- Ensure that confidential, detailed and accurate records of all safeguarding and child protection concerns are maintained and securely stored.
- Prevent the employment/deployment of unsuitable individuals
- Help protect children and young people from exploitation including radicalisation, sexual and criminal (county lines)
- Ensure robust safeguarding arrangements and procedures are in operation in school

The policy and procedures will be widely promoted and are mandatory for everyone involved in school. Failure to comply with the policy and procedures will be addressed without delay and may ultimately result in dismissal/exclusion from this school.

### 1.1 Definitions of Abuse

Children have been abused or at risk of abuse when the basic needs of the child are not being met through acts of either commission or omission. Types of abuse and neglect include:

**Physical Abuse**

**Emotional Abuse**

**Sexual Abuse**

**Neglect**

The ability of staff to recognise the signs and symptoms of abuse will depend upon their experience and training, however **all** members of staff should be alert to the possible signs of abuse. For full details of definitions, please see (**Appendix 5**)

In line with Keeping Children Safe in Education 2018, the definition of safeguarding for this document is as follows:

**Para. 4**

- Protecting children from maltreatment;
- preventing impairment of children’s health or development;
- ensuring that children grow up in circumstances consistent with the provision of safe and effective care; and
- taking action to enable all children to have the best outcomes.

**Keeping Children Safe in Education, September 2018.**

## 2. Safeguarding in Schools

Effective child protection processes and procedures in schools and education settings are embedded as part of a safer school culture. To establish and maintain an open and safer culture we will:

- Establish and maintain an environment where children and young people feel secure, are encouraged to talk and they feel listened to
- Ensure children and young people know there are adults in school they can talk to if they are worried
- Ensure that within the curriculum children and young people are taught the skills they need to recognise and stay safe from all kinds of harm, including staying safe online, and exploitation
- Ensure that children and young people who may be particularly vulnerable, such as those with SEN and disabilities are supported
- Ensure that children and young people that have English as an additional language have access to support and information that is clear, accessible and in their preferred language

### 2.1 Specific Safeguarding Issues

**Para.47**

All staff should have an awareness of safeguarding issues that can put children at risk of harm. Behaviours linked to issues such as drug taking, alcohol abuse, deliberately missing education and sexting (also known as youth produced sexual imagery) put children in danger.

**Keeping Children Safe in Education, September 2018.**

**Children Missing in Education** – all staff should be aware that children going missing, particularly repeatedly, can act as a vital warning sign of a range of safeguarding possibilities. This may include,

- Abuse and neglect
- Sexual Abuse
- Exploitation
- Mental health problems
- Risk of substance misuse
- Risk of travelling to conflict zones
- Risk of Female Genital Mutilation
- Risk of Forced Marriage

Every attempt should have been made by the school to make contact with the child and their family. After 10 days if the child is still missing from education, the school should inform the Local Authority CME officer, and the local CME procedures followed.

**Child Exploitation** – all staff should recognise child exploitation as a form of child abuse. This occurs when an individual or group takes advantage of an imbalance of power to coerce, manipulate or deceive children under the age of 18. The nature of exploitation can be sexual, where sexual activity takes place in exchange for something, the victim needs or wants, financial advantage, or increased status of the perpetrator or facilitator. It can also be criminal, where drug networks or gangs groom and exploit children to carry drugs and money across county lines, from urban areas to suburban and rural areas, market and seaside towns.

**Team Shield** – Knowsley has a dedicated multi-agency team that aims to work together with children, families and the community to offer a range of services to reduce the risk of child exploitation. Team Shield can provide a central point for professionals to receive expert support with reference to child exploitation. They provide a coordinated and proactive response to child exploitation: prevention, safeguarding and prosecution.

Where staff in school have concerns relating to child exploitation, and the case is not already open, they should follow the procedures detailed in this policy and complete a Multi Agency Referral Form (MARF) and Child Exploitation referral 1. Once completed it is sent into Multi Agency Safeguarding Hub (MASH) where it will then be processed and forwarded to Sheild.

**Domestic Abuse** – is defined as any incident, pattern of incident of controlling, coercive, threatening behaviour, violence, or abuse between those aged 16 or over who are, or have been, intimate partners or family members regardless of gender or sexuality. The abuse can encompass, but is not limited to:

- Psychological
- Physical
- Sexual
- Financial
- Emotional

Exposure to domestic abuse can have a serious, long lasting emotional and psychological impact on children.

**Operation Encompass** – All Knowsley schools have a named Operation Encompass (OE) contact. When the Police attend a Domestic Abuse call and they are aware children have been present, they will record details of the school or nursery provision the child attends. The relevant schools or settings will be contacted and made aware as early as possible of the incident. Once the school OE champion is aware, they can take actions to support and safeguard the child. The actions taken by the school will be recorded on Operation Encompass recording sheets.

### **Female Genital Mutilation (FGM)**

#### **Para. 34**

Whilst all staff should speak to the designated safeguarding lead (or deputy) with regard to any concerns about female genital mutilation (FGM), there is a specific **legal** duty on **teachers**. If a **teacher**, in the course of their work in the profession, discovers that an act of FGM appears to have been carried out on a girl under the age of 18, the teacher **must** report this to the police.

**Keeping Children Safe in Education, September 2018**

Female Genital Mutilation (sometimes referred to as ‘Cutting’) comprises all procedures involving partial or total removal of the external female genitalia or other injury to the female genital organs. It is illegal in the UK and is a form of child abuse with long-lasting and harmful consequences.

If staff have a concern, Knowsley safeguarding procedures should be followed. Teachers must personally report to the police cases where they discover that an act of FGM appears to have been carried out. Unless the teacher has a good reason not to, they should also still consider and discuss any such case with the Designated Safeguarding Lead. The duty does not apply in relation to at risk or suspected cases. In these cases teachers should follow Knowsley Safeguarding Children Board procedures.

## **Preventing Radicalisation**

**Children are vulnerable to extremist ideology and radicalisation. Similar to protecting children from other forms of harm and abuse, protecting children from this risk should be part of a schools' or colleges' safeguarding approach.**

**Page 81, Keeping Children Safe in Education, September 2018.**

Children and young people may become vulnerable and susceptible to radicalisation through a range of social, personal and environmental factors. There is an awareness of the specific need to safeguard children, young people and their families from violent extremism.

Schools are expected to assess the risk of children being drawn into terrorism, including support for extremist ideals that are part of terrorist ideology. Schools and colleges should have clear procedures in place for protecting children at risk of radicalisation.

Further information and guidance can be found on the [www.gov.uk](http://www.gov.uk) website.

## **Extremism**

**Is the vocal or active opposition to our fundamental values, including the rule of law, individual liberty and the mutual respect and tolerance of different faiths and beliefs. This also includes calling for the death or members of the armed forces.**

**Page81, Keeping Children Safe in Education, September 2018.**

Exploitation and radicalisation is a safeguarding concern. As such, in order to uphold the ethos and values of our school/ setting we will make a commitment to,

- Keep up to date on the latest advice and guidance provided to assist in addressing specific vulnerabilities and forms of exploitation.
- Support staff to recognise warning signs and symptoms in relation to children and young people and include such issues in the curriculum in an age appropriate way.
- Support staff to talk to families about sensitive concerns in relation to their children and explore ways to address them
- Ensure the Designated Safeguarding Lead knows where to seek and get advice as necessary

As with managing other safeguarding risks, staff should be alert to changes in children's behaviour which could indicate that they may be in need of help or protection.

## Channel

Channel is a programme that focuses on providing support at an early stage to people who are identified as being vulnerable to being drawn into terrorism. It provides a mechanism for schools to make referrals if they are concerned that an individual might be vulnerable to radicalisation

**Page 83, Keeping Children Safe in Education, September 2018.**

In Knowsley a referral made into the Channel Panel via the MASH. **It falls to the referrer to highlight the concern in relation to the Prevent Duty.**

**Peer on peer abuse-** All staff should be clear as to the school policy and procedures with regards to peer on peer abuse.

## Para. 48

**All** staff should be aware that safeguarding issues can manifest themselves via peers on peer abuse. This is most likely to include but is not limited to:

- Bullying (including cyber bullying)
- Physical abuse such as hitting, kicking, shaking, biting, hair pulling or otherwise causing physical harm
- Sexual violence and sexual harassments;
- Sexting (also known as youth produced sexual imagery); and
- Initiation/hazing type violence and rituals

**Keeping Children Safe in Education, September 2018.**

Peer on peer abuse is abuse and will never be tolerated or passed off as ‘banter’, ‘just having a laugh’ or ‘part of growing up’. All allegations of peer on peer abuse will be recorded as a child welfare concern and will be dealt with in line with the school behaviour policy and anti bullying policy.

## **Youth Produced Sexual Imagery/Sexting**

Youth produced sexual imagery/Sexting is when someone shares sexual, naked or semi naked images or videos of themselves or others. It includes the sending of sexually explicit images, or text messages. The images or messages can be sent by mobiles, tablets, smart phones or laptops or any device that enables messages and images to be shared or sent.

### Sexting and the Law:

A young person is breaking the law if they

- Take an explicit photo or video of themselves or a friend
- Share an explicit image or video of a child, even if is shared between children of the same age



- Possess, download or explore an explicit image or video of a child, even if the child gave their permission for it to be created.

As of January 2016, if a young person is found creating or sharing images, the police can choose to record that a crime has been committed but that taking formal action is not in the public interest.

**2.** All incidents involving youth produced sexual imagery should be responded to in line with the school's safeguarding and child protection policy.

When an incident involving youth produced sexual imagery comes to a school or college's attention:

- The incident should be referred to the DSL as soon as possible
- The DSL should hold an initial review meeting with appropriate school staff
- There should be subsequent interviews with the young people involved (if appropriate)
- Parents should be informed at an early stage and involved in the process unless there is good reason to believe that involving parents would put the young person at risk of harm
- At any point in the process if there is a concern a young person has been harmed or is at risk of harm a referral should be made to children's social care and/or the police immediately.

**Sexting in Schools: Responding to Incidents and Safeguarding Young People. 2016**

### **Child on Child sexual violence and sexual harassment.**

In line with this policy when dealing with a disclosure of child on child sexual violence and sexual harassment it is essential that all victims are reassured that they are being taken seriously.

When there has been a report of sexual violence, the designated safeguarding lead should make an immediate risk and needs assessment in relation to all the children involved. The risk and needs assessment should consider:

- The victim, especially their protection and support
- The alleged perpetrator; and
- All the other children (and if appropriate adults students and staff) at the school or college, especially any actions that are appropriate to protect them.

### **(Appendix 6) Safeguarding risk and needs identification template for schools**

Every report of child on child sexual violence and harassment will be considered on a case-by-case basis. There are four likely options for schools to consider when managing such reports.

- Managing Internally
- Early Help
- Referrals to children's social care
- Reporting to the Police.

It is imperative across all options, that all concerns, discussions, decisions and reasons for decisions are accurately recorded.

In line with the Knowsley procedures, when considering a referral into Early Help, Children's Social Care, or the Police, schools should access the guidance detailed in the Children who display Sexually Inappropriate and Harmful Behaviour Protocol.

<http://knowsleyscb.proceduresonline.com/index.htm>

## **2.2 Staff have a particular contribution to make in listening to children and young people who have experienced abuse.**

This should be valued and recognised, however it is understood that this work will only be carried out as part of an agreed plan and with a view to ensure it does not impact on any legal processes through which the child may be involved.

It is recognised that children who are abused or who witness domestic abuse may find it difficult to develop a sense of self-worth. They may feel helpless, humiliated and hold some sense of blame. School may be the only stable, secure and predictable element in the lives of children and young people who are at risk.

In line with Keeping Children Safe in Education Guidance, September 2018, we will endeavour to support children and young people through;

- Ensuring the content of the curriculum encourages self-esteem and self-motivation
- The identification of a Designated Safeguarding Lead (**See Appendix 1**)
- Promoting an ethos of positive support and create a safe and secure environment for staff and students.
- Upholding the school behaviour policy, ensuring students are aware that whilst some types of behaviour are unacceptable, however they are valued and not blamed for any abuse that may have occurred
- Recognising that children and young people living in environments where there is domestic abuse, adult drug/alcohol misuse, adult mental health issues and/or criminality are vulnerable and may be in need of support and protection
- Monitoring the welfare of children and young people who are its students, keeping accurate records, and notifying Children's Social Care via the Multi Agency Safeguarding Hub (MASH) as soon as there is a child protection concern at level 4 in the Knowsley Model of Children in need.
- Identifying a key member of staff as an Operation Encompass Champion whose role is to receive information from the Police relating to incidents of Domestic Abuse

- Initiating and contributing to assessments relating to the child or young person and their family, including Early Help Assessments in line with the Knowsley Model of Children in Need.

**Para. 59**

Governing bodies and proprietors should appoint an appropriate **senior member** of staff, from the school or college **leadership team**, to the role of designated safeguarding lead. The designated safeguarding lead should take **lead responsibility** for safeguarding and child protection. This should be explicit in the role-holder's job description.

**Keeping Children Safe in Education, September 2018.**

**2.3 In order to support students and their families when dealing with safeguarding and potential child protection issues, School/Education settings will;**

- Undertake discussions with the parents (or if appropriate the child or young person), to gain consent to share information prior to the involvement of another agency unless this may put the child at increased risk of significant harm.
- Ensure parents have a clear understanding of the **duty** placed on school staff with regards the safeguarding and child protection
- Ensure that parents are aware of the intention to make a referral into Children's Social Care via the MASH, unless to do so may put the child at increased risk of significant harm.

**Para. 7**

**All** staff should be prepared to identify children who may benefit from early help. Early help means providing support as soon as a problem emerges at any point in a child's life, from the foundation years through to the teenage years.

**Keeping Children Safe in Education, September 2018.**

In order to effectively contribute to the Early Help Assessment process staff will actively participate and contribute to the development of a common assessment process that considers the needs of the child and the family.

Early Help Assessments are conducted in order to facilitate earlier identification and intervention supporting children with additional needs.

In order to ensure the effectiveness of the Early Help Assessments school staff will,

- Participate in Early Help Assessment training
- Develop effective links with other services and agencies
- Work in partnership with children, young people and their families
- Identify an Early Help Lead person within the school

In making an Early Help referral in Knowsley a Multi Agency Referral Form (MARF) must be completed and submitted to the MASH.

### 3. Child Protection Procedures

In accordance with statutory guidance governing bodies and proprietors should ensure that the school/education setting has the following in place,

- An effective child protection policy and procedures in place that are in accordance with the local authority guidance and locally agreed inter-agency procedures
- That the child protection policy and procedures are made available on the school website or to pupils, student and parents on request
- Procedures in place for dealing with complaints about safeguarding arrangements which should be accessible to staff, pupils and parents.

The child protection procedures for schools and education settings will ensure;

- The procedures set out in the Knowsley Safeguarding Children Board (KSCB) Safeguarding Children Procedures Manual are followed, together with the KSCB multi agency Child Protection Standards. These multi agency procedures are updated and held on line at [www.knowsleysafeguardingchildren.co.uk](http://www.knowsleysafeguardingchildren.co.uk)
- A member of staff who has child protection concerns about a child or young person, will immediately inform the Designated Safeguarding Lead, and record accurately the events giving rise to the concern.
- If the Designated Safeguarding Lead is unavailable the member of staff should speak to the Deputy Designated Lead if they have one, or to the named person in the Local Authority, Safeguarding Education Officer, for advice. **Under no circumstances should the member of staff attempt to resolve the matter without first taking advice.**
- Understanding that taking no action does not safeguard children, once a piece of information is received there should not be an assumption that someone else will act. Discussions should be had and the outcome should clearly note what actions will be taken, by who and why.

(For Child Protection Procedures flow chart **see appendix 2.**)

#### Para 16.

**All** staff should know what to do if a child tells them he/she is being abused or neglected. Staff should know how to manage the requirement to maintain an appropriate level of confidentiality. This means only involving those who need to be involved, such as the designated safeguarding lead (or a deputy) and the children's social care. Staff should never promise a child that they will not tell anyone about a report of abuse, as this may ultimately not be in the best interests of the child.

**Keeping Children Safe in Education, September 2018.**

As part of the extended school provision, should any member of staff delivering this provision become aware of a child protection concern where a child is suffering, or likely to suffer significant harm, they should follow the procedure and contact the Children’s Social Care Duty Team via the MASH. They should record their concerns and actions, and inform the setting Designated Safeguarding Lead as soon as practicable.

### 3.1 Dealing with a disclosure

<b>Do</b>	<b>Don’t</b>
<ul style="list-style-type: none"> <li>- Stay Calm</li> <li>- Listen carefully, let the child tell their story and take it seriously</li> <li>- Keep the child informed about what you are doing and what is happening at every stage</li> <li>- Reassure them they have done nothing wrong and it is not their fault</li> <li>- Make a full record of what has been said as soon as possible</li> </ul>	<ul style="list-style-type: none"> <li>- Promise confidentiality. Be honest about your own position, who you will have to tell and why</li> <li>- Ask leading questions (e.g. Did your mother do this to you)</li> <li>- Press the child for more details</li> <li>- Make promises (e.g. this will never happen again)</li> </ul>

Once a disclosure has been made or a concern has been shared, the Designated Safeguarding Lead will consider the information, if necessary take advice, and will make a decision following the guidance detailed in Para 24, KCSIE, 2018.

#### Para. 24

- Managing any support for the child internally via the school or college’s own pastoral support processes;
- An early help assessment; or
- A referral for statutory services, for example as the child might be in need, is in need or suffering or likely to suffer harm

**Keeping Children Safe in Education, September 2018.**

Once the decision is made to make a referral the Designated Safeguarding Lead will contact the Knowsley Assessment Team and make a telephone referral. This must be followed up in writing using the Multi Agency Referral Form within 24 hours.

As part of the KSCB multi agency procedures Children’s Social Care will inform the referrer of the outcome progress of the referral within 3 working days. If the Designated Safeguarding Lead does not receive this information it is their responsibility to follow up the progress of the referral.

## 3.2 Making a referral

### Para. 28

Where a child is suffering, or is likely to suffer from harm, it is important that a referral to children's social care ( and if appropriate the police) is made immediately. Referrals should follow the local authority's referral process.

Keeping Children Safe in Education, September 2018.

All staff will know what to do if a child tells them he/she is being abused or neglected. Staff members working with children are advised to maintain an attitude of '**it could happen here**' where safeguarding and child protection are concerned.

As such all staff should be aware through training how to make a referral into the Knowsley MASH. (**See Appendix 2**)

When making a referral the following information is required:

- Your name and where you are from
- The child's details – name, address, date of birth etc
- Details of the child's parents/carers
- Nature of the referral relating to significant harm and the category of abuse
- Any relevant context that supports the referral information
- If the parents have been informed of referral, and if not the reason why

## 3.3 Confidentiality and Information Sharing

Sharing information is essential in working together to safeguard children. Professionals, agencies and services are required to securely share information securely:

- About children and their health and development in relation to exposure to possible abuse and neglect
- About parents who may not be able to care adequately and safely for children
- About individuals who may present a risk to children

Where there are concerns that a child is, or may be at risk of significant harm, the needs of the child must always come first; **the priority must always be to protect the child.**

If there is any doubt about confidentiality, staff should seek advice from a senior manager or outside agency as required.

The Headteacher/Designated Safeguarding Lead will only disclose information about a student to other members of the staff team on a need to know basis. In line with the *HM Government Information Sharing: Guidance for practitioners and managers*. Seven Golden Rules for information sharing, the appropriateness of sharing information should have a direct relevance on the ability of the member of staff to carry out their role.

For Seven Golden Rules of Information Sharing (**see Appendix 3.**)

All staff must be aware that they have a professional responsibility to share information securely with other agencies in order to safeguard children.

### 3.4 Record Keeping

To ensure good safeguarding and child protection practice schools and education settings are required to keep clear and detailed written records of concerns about children, even when there is no need to refer the matter to Children's Social Care immediately.

Records should clearly indicate statements of fact, opinion, first and second hand information, including who, what, where and why. All child welfare concern and child protection records should be kept securely in locked locations with limited access.

The document Information and Data Security: Guidance for Knowsley Schools (Version 4.0) has been shared with schools and sets out the following guidance for the management of child protection files in schools.

Records	Basic File	Retention Period	At end of retention	Notes
<b>All other important and prime documentation</b>	Child Protection files	DOB + 75 years	Confidentially dispose	Child Protection information must be copied and sent under separate cover to new school/college whilst the child is still under 18 (i.e. the information does not need to be sent to a university for example). Where a child is removed from roll to be educated at home, the file should be copied to the Local Education Authority.

### 3.5 Transfer of Child Protection Records

It is the responsibility of the Headteacher to pass on confidential information to the students next school, college or education setting.

Transfer of records checklist:

- The Headteacher should inform a child's social worker immediately if they are aware that a child is moving to a new Borough.
- Arrangements should be made before the records are transferred
- All original child protection records should be forwarded for the attention of the Headteacher of the receiving school

- Only on confirmation of receipt of the records in the receiving school, should all previous copies be destroyed in line with the confidential waste guidelines
- In event of not being able to trace a child, the school should contact the School Attendance Improvement Officer (SAIO) and ask them to make further enquiries.

For Receipt of Child Protection File template **see appendix 4**

If a Head Teacher is aware when a new student is admitted there are previous child protection concerns, every effort should be made to obtain the confidential child protection file from their previous school, college or education setting.

### **3.6 Disqualification under the Childcare Act 2006 – Draft guidance for local authorities, maintained schools, academies and free schools. July 2018**

DfE issued draft statutory guidance for schools and colleges in relation to Disqualification under the Childcare Act.

#### **Para 9.**

Staff are covered by this legislation if they are employed or engaged to provide early years childcare (this covers the age range from birth until 1 September following a child's fifth birthday i.e. up to and including reception year) or later years childcare (this covers children above the reception age but who have not attained the age of 8) in nursery, primary or secondary school settings, or if they are directly concerned with the management of such childcare.

**Disqualification under the Childcare Act 2006, July 2018.**

Staff who are **not** employed to directly provide childcare, are **not** covered by the legislation. Similarly, most staff who are only occasionally deployed and are not regularly required to work in relevant childcare will **not** automatically come within the scope of the legislation. The guidance suggests that schools may choose to obtain professional advice from their H.R. link officer, LADO, or safeguarding lead officer, to help them establish whether staff with relevant cautions or convictions are disqualified from working in relevant childcare.

#### **Disqualification by Association**

#### **Para, 21.**

Under the 2018 Regulations, schools are no longer required to establish whether a member of staff providing, or employed to work in, childcare is disqualified by association. Regulation 9 does not apply to staff in a relevant school setting; disqualification by association is only relevant where childcare is provided in domestic settings (e.g. where childminding is provided in the home) or under registration on domestic premises. Accordingly schools should not ask their staff questions about cautions or convictions of someone living or working in their household.

**Disqualification under the Childcare Act 2006, July 2018. (Draft)**



Full access to the guidance document can be accessed via the link below.

<https://www.gov.uk/government/publications/disqualification-under-the-childcare-act-2006#history>

#### **4. Monitoring and Review**

This policy document will be monitored and reviewed annually in accordance with best practice or in the following circumstances:

- Changes in legislation and/or government guidance
- As required by the Local Safeguarding Children Board, and Ofsted
- As a result of any other significant change or event.

In the interests of safeguarding and protecting the welfare of children and young people it is suggested that all staff receive a copy of the settings Safeguarding Child Protection policy, and sign a safeguarding checklist to say they have read and understood its content

## Appendix 1

### Annex B: Role of the designated safeguarding lead : Keeping Children Safe in Education September 2018.

Governing bodies, proprietors and management committees should appoint an appropriate **senior member** of staff, from the school or college **leadership team**, to the role of designated safeguarding lead. The designated safeguarding lead should take **lead responsibility** for safeguarding and child protection. This should be explicit in the role-holder's job description. This person should have the appropriate status and authority within the school to carry out the duties of the post. They should be given the time, funding, training, resources and support to provide advice and support to other staff on child welfare and child protection matters, to take part in strategy discussions and inter-agency meetings – and/or to support other staff to do so – and to contribute to the assessment of children.

#### Deputy designated safeguarding leads

It is a matter for individual schools and colleges as to whether they choose to have one or more deputy designated safeguarding lead(s). Any deputies should be trained to the same standard as the designated safeguarding lead.

Whilst the activities of the designated safeguarding lead can be delegated to appropriately trained deputies, the ultimate **lead responsibility** for child protection, as set out above, remains with the designated safeguarding lead; this **lead responsibility** should not be delegated.

#### Manage referrals

The designated safeguarding lead is expected to:

- refer cases of suspected abuse to the local authority children's social care as required;
- support staff who make referrals to local authority children's social care;
- refer cases to the Channel programme where there is a radicalisation concern as required;
- support staff who make referrals to the Channel programme;
- refer cases where a person is dismissed or left due to risk/harm to a child to the Disclosure and Barring Service as required; and
- refer cases where a crime may have been committed to the Police as required.

#### Work with others

The designated safeguarding lead is expected to:

- liaise with the headteacher or principal to inform him or her of issues especially ongoing enquiries under section 47 of the Children Act 1989 and police investigations;
- as required, liaise with the "case manager" (as per Part four) and the designated officer(s) at the local authority for child protection concerns (all cases which concern a staff member); and
- liaise with staff (especially pastoral support staff, school nurses, IT Technicians, and SENCO's or the named person with oversight for SEN in a college) on matters of safety and safeguarding (including online and digital safety) and when deciding whether to make a referral by liaising with relevant agencies.

- Act as a source of support, advice and expertise for staff.

## Training

The designated safeguarding lead (and any deputies) should undergo training to provide them with the knowledge and skills required to carry out the role. This training should be updated at least every two years.

The designated safeguarding lead should undertake Prevent awareness training.

In addition to the formal training set out above, their knowledge and skills should be refreshed (this might be via e-bulletins, meeting other designated safeguarding leads, or simply taking time to read and digest safeguarding developments) at regular intervals, as required, but at least annually, to allow them to understand and keep up with any developments relevant to their role so they:

- understand the assessment process for providing early help and intervention, for example through locally agreed common and shared assessment processes such as early help assessments;
- have a working knowledge of how local authorities conduct a child protection case conference and a child protection review conference and be able to attend and contribute to these effectively when required to do so;
- ensure each member of staff has access to and understands the school or college's child protection policy and procedures, especially new and part time staff;
- are alert to the specific needs of children in need, those with special educational needs and young carers;
- are able to keep detailed, accurate, secure written records of concerns and referrals;
- understand and support the school or college with regards to the requirements of the Prevent duty and are able to provide advice and support to staff on protecting children from the risk of radicalisation;
- are able to understand the unique risks associated with online safety and be confident that they have the relevant knowledge and up to date capability required to keep children safe whilst that are online at school or college;
- can recognise the additional risks that children with SEN and disabilities (SEND) face online, for example, from online bullying, grooming and radicalisation and are confident they have the capability to support SEND children to stay safe online;
- obtain access to resources and attend any relevant or refresher training courses; and

- encourage a culture of listening to children and taking account of their wishes and feelings, among all staff, in any measures the school or college may put in place to protect them

### **Raise Awareness**

The designated safeguarding lead should;

- ensure the school or college's child protection policies are known, understood and used appropriately;
- Ensure the school or college's child protection policy is reviewed annually (as a minimum) and the procedures and implementation are updated and reviewed regularly, and work with governing bodies or proprietors regarding this;
- Ensure the child protection policy is available publicly and parents are aware of the fact that referrals about suspected abuse or neglect may be made and the role of the school or college in this; and
- Link with the local LSCB to make sure staff are aware of training opportunities and the latest local policies on safeguarding.

### **Child protection file**

Where children leave the school or college ensure their child protection file is transferred to the new school or college as soon as possible. This should be transferred separately from the main pupil file, ensuring secure transit and confirmation of receipt should be obtained. Receiving schools and colleges should ensure key staff such as designated safeguarding leads and SENCOs or the named person with oversight for SEN in colleges, are aware as required.

In addition to the child protection file, the designated safeguarding lead should also consider if it would be appropriate to share any information with the new school or college in advance of a child leaving. For example, information that would allow the new school or college to continue supporting victims of abuse and have that support in place for when the child arrives.

### **Availability**

During term time the designated safeguarding lead (or a deputy) should always be available (during school or college hours) for staff in the school or college to discuss any safeguarding concerns. Whilst generally speaking the designated safeguarding lead (or deputy) would be expected to be available in person, it is a matter for individual schools and colleges, working with the designated safeguarding lead, to define what "available" means and whether in exceptional circumstances availability via phone and or Skype or other such media is acceptable.

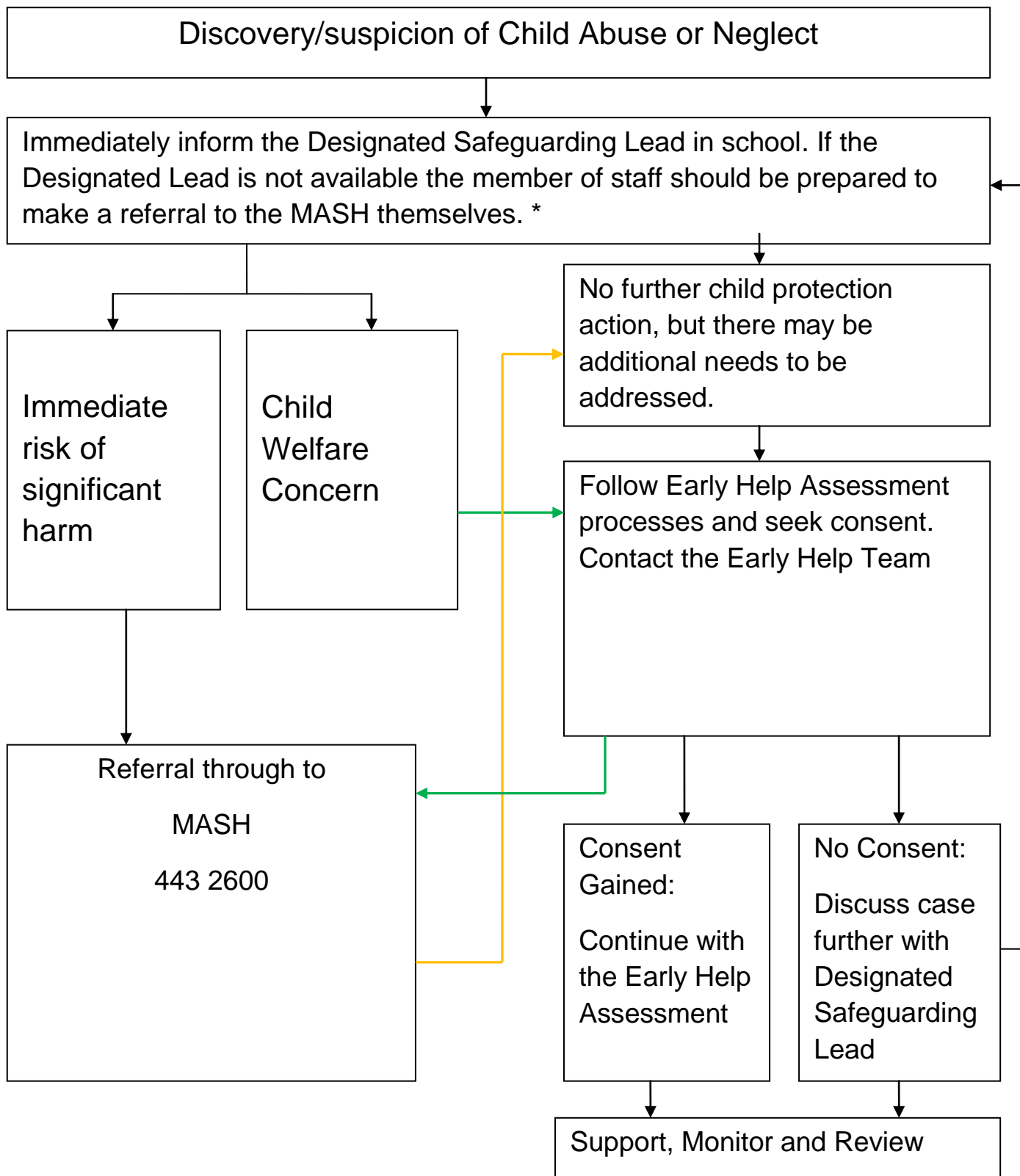
It is a matter for individual schools and colleges and the designated safeguarding lead to arrange adequate and appropriate cover arrangements for any out of hours/out of term activities.

**Additional duties**

In Knowsley the Designated Safeguarding Lead may also act as champion for local/ area initiatives such as Operation Encompass, Child Exploitation single point of contact and Private Fostering.

## Appendix 2

### Child Protection Procedures Flow Chart



\*Paragraph 29. Where a child is suffering, or is likely to suffer from harm, it is important that a referral to children's social care (and if appropriate the police) is made immediately. KCSIE,2018

## Appendix 3



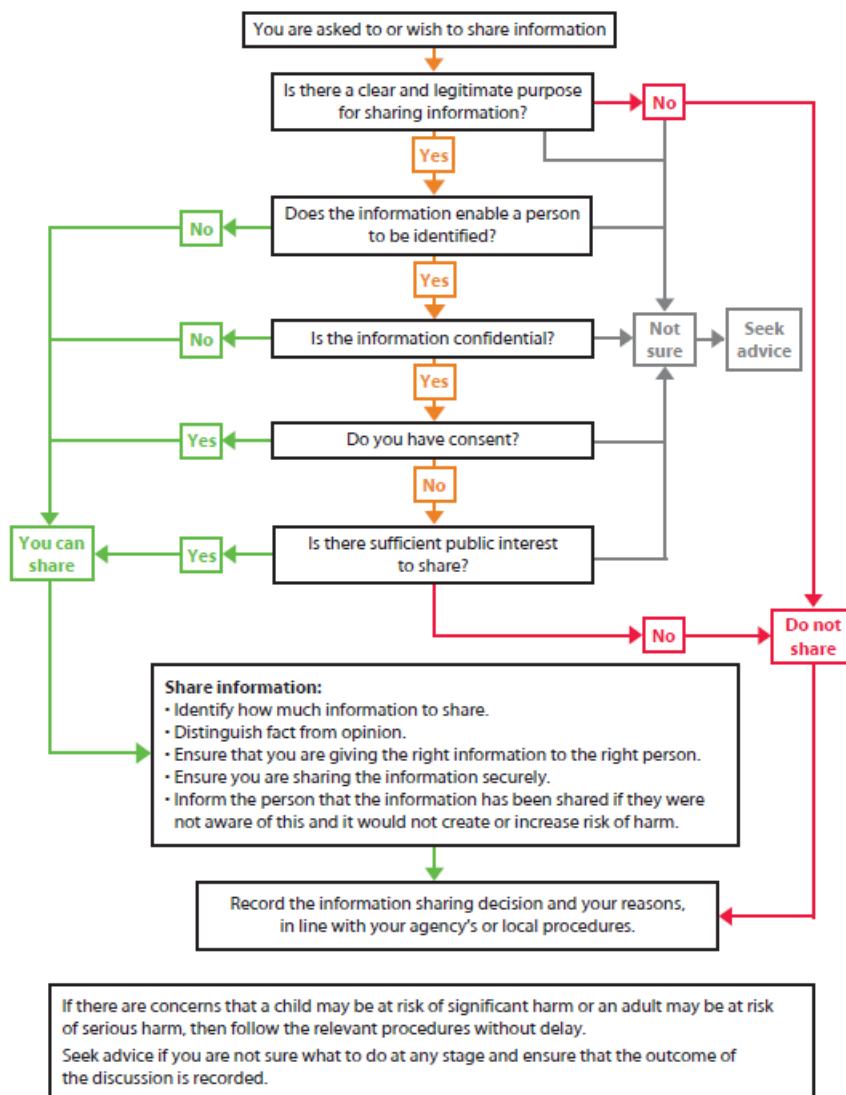
# Seven golden rules for information sharing

1. **Remember that the Data Protection Act is not a barrier to sharing information** but provides a framework to ensure that personal information about living persons is shared appropriately.
2. **Be open and honest** with the person (and/or their family where appropriate) from the outset about why, what, how and with whom information will, or could be shared, and seek their agreement, unless it is unsafe or inappropriate to do so.
3. **Seek advice** if you are in any doubt, without disclosing the identity of the person where possible.
4. **Share with consent where appropriate** and, where possible, respect the wishes of those who do not consent to share confidential information. You may still share information without consent if, in your judgement, that lack of consent can be overridden in the public interest. You will need to base your judgement on the facts of the case.
5. **Consider safety and well-being:** Base your information sharing decisions on considerations of the safety and well-being of the person and others who may be affected by their actions.
6. **Necessary, proportionate, relevant, accurate, timely and secure:** Ensure that the information you share is necessary for the purpose for which you are sharing it, is shared only with those people who need to have it, is accurate and up-to-date, is shared in a timely fashion, and is shared securely.
7. **Keep a record** of your decision and the reasons for it – whether it is to share information or not. If you decide to share, then record what you have shared, with whom and for what purpose.

Local contacts

Extract from HM Government *Information Sharing: Guidance for practitioners and managers*.  
Copies can be obtained from [www.ecm.gov.uk/informationsharing](http://www.ecm.gov.uk/informationsharing)

# Flowchart of key questions for information sharing



Local contacts

Extract from HM Government *Information Sharing: Guidance for practitioners and managers*. Copies can be obtained from [www.ecm.gov.uk/informationsharing](http://www.ecm.gov.uk/informationsharing)



**IMPORTANT:** The receiving school must return this section to the issuing school.

**Name of Receiving School:**

**Issuing School:**

**School Name:**

**Ravenscroft Community Primary School**

**School Address:**

**Ebony Way, Kirkby, Merseyside L33 1XT**

**Child's Name:**

**DOB:**

**I confirm receipt of the child protection files on the above named pupil:**

**Name:**

**Job Title:**

**Signature:**

**Date:**

## Appendix 5

### DEFINITIONS OF ABUSE

#### “WORKING TOGETHER TO SAFEGUARD CHILDREN” 2013

#### Neglect

‘The persistent failure to meet a child’s basic physical and / or psychological needs, likely to result in the serious impairment of the child’s health or development.’

Neglect may occur during pregnancy as a result of maternal substance abuse. Once a child is born, neglect may involve a parent or carer failing to:

- Provide adequate food, clothing and shelter (including exclusion from home or abandonment)
- Protect a child from physical and emotional harm or danger
- Ensure adequate supervision (including the use of inadequate care-givers)
- Ensure access to appropriate medical care or treatment

It may also include unresponsiveness to, or neglect of child’s basic emotional needs

#### Emotional Abuse

The persistent emotional maltreatment of a child such as to cause severe and persistent adverse effects on the child’s emotional development.. It may include;

- Conveying to children that they are worthless or unloved, inadequate or valued only insofar as they meet the needs of another person.
- not giving the child opportunities to express their views, deliberately silencing them or ‘making fun of what they say or how they communicate.
- It may feature age or developmentally inappropriate expectations being imposed on children. These may include interactions that are beyond the child’s developmental capability, as well as overprotection and limitation of exploration and learning, or preventing the child participating in normal social interaction.
- seeing or hearing the ill-treatment of another.
- serious bullying (Including cyber bullying) causing children frequently to feel frightened or in danger, or the exploitation or corruption of children.
- Some level of emotional abuse is involved in all types of maltreatment of a child, though it may occur alone.

## Sexual Abuse

Involves forcing or enticing a child or young person to take part in sexual activities, not necessarily involving a high level of violence, whether or not the child is aware it is happening. The activities may involve:

- Physical contact, including assault by penetration (for example, rape or oral sex) or non-penetrative acts such as masturbation, kissing, rubbing and touching outside of clothing.

They may also include non-contact activities such as:

- Involving children in looking at, or in the production of: sexual images or watching sexual activities, or encouraging children to behave in sexually inappropriate ways, or grooming a child in preparations for abuse
- Sexual abuse can take place online, and technology can be used to facilitate abuse.

Sexual abuse is not solely perpetrated by adult males. Women can also commit acts of sexual abuse as can other children.

## Physical Abuse

A form of abuse which may involve:

- Hitting
- Shaking throwing
- Poisoning
- Burning or scalding
- Drowning
- Suffocating
- Or otherwise causing physical harm to a child.

Physical harm may also be caused when a parent or carer fabricates the symptoms of, or deliberately induces, illness in a child



**THRESHOLDS - THE CONTINUUM OF NEED**

